



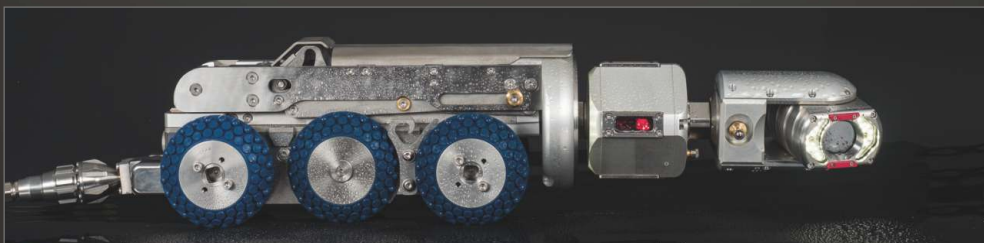
# ibos®



## NEW CamBoss IV

New camera line for pipe inspection DN 150 – 1000.

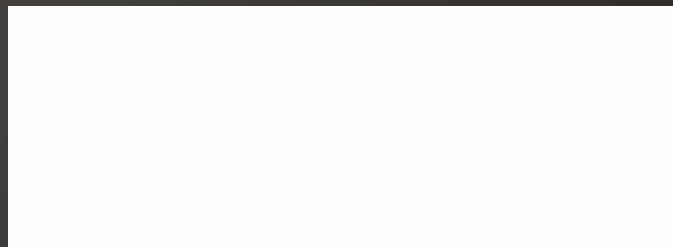
- Usage of Swiss brushless engines with capacity 100 W, which enable simple controlling and turning of camera crawler.
- The camera head is installed on scissor pantograph - with help of this it is possible to lift the camera head into the pipe axis.
- The camera crawler is fitted with reversing camera – sensitivity 0,025 lux, LED auxiliary lights and chassis for big pipe diameters.
- Fully automatic reel with capacity 200 – 500 m cable.
- Options – mobile or fixed built-in into the van.
- The system provides full reverse compatibility with NAVI 300, ReBoss and KZ90CB.
- Wide selection of additional components – wheels made of polyurethane, “tractor” wheels, manual arm, manual reel.



### IBOS a.s.

Hlinska 694/2b, 370 01 Ceske Budejovice, Czech Republic  
Tel.: +420 387 310 227 | Fax: +420 387 310 226 | E-mail: [ibos@ibos.cz](mailto:ibos@ibos.cz)

[www.ibos.cz](http://www.ibos.cz)



REPRESENTATION